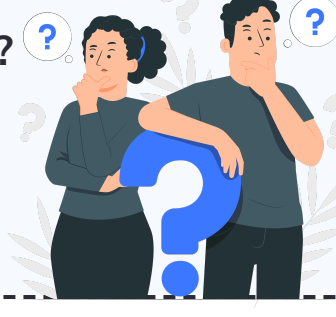


How BYOD and WP-C Compare



What's the right **device strategy** for your organization?

Will **flexibility** with BYOD serve you better, or is the **control** of WP-C the smarter choice?



Each approach brings its own set of benefits and challenges—and the decision can greatly impact your company's **productivity**, **security**, and **manageability**.

Here's how these options compare

BYOD

(Bring Your Own Device)

VS

WP-C

(Work Profile on Company-Owned Device)



Provides secure management of personal devices remotely, without entire device control.



Supports secure work containers on company devices for efficient onboarding and support



Relies on layered security measures to safeguard company data, ensuring personal information on devices remains untouched.



Isolates corporate data within a secure work profile, minimizing risks of data breaches and ensuring robust information protection.



Personal privacy is prioritized, with only work-related data monitored and managed, but enforcing compliance can be challenging without impacting personal data.



Achieves strict compliance by separating work and personal profiles, enabling full control over corporate data while preserving the user's personal privacy.



Employees use familiar devices, enhancing comfort but risking inconsistent app compatibility and performance.



Company-owned devices ensure consistency with corporate apps, boosting productivity and efficiency.



Lower device costs with BYOD, but support and management expenses may increase.



Requires investment in company-owned devices but offers standardized management, reducing long-term costs.

Hexnode: Simplifying Security



Hexnode offers powerful features for both BYOD and WP-C, aligning with workplace goals and enabling effective, flexible device management.

Here's a look at what it offers.

BYOD

Secure Containerization

Hexnode creates a distinct work container on personal devices, isolating corporate data from personal information to maintain security and privacy.

Work Data Encryption

Encryption adds a layer of protection for corporate data on BYOD devices without impacting personal data.

Conditional Access

By setting conditional access rules, only compliant BYOD devices can access corporate networks and apps, reducing unauthorized access risks.



Selective Wipe

Selective wiping allows IT to remove work data from personal devices during employee turnover or device loss, preserving personal data.

WP-C

Work Profile

A separate work profile on company-owned devices securely isolates corporate apps and data from personal use.

Remote Data Protection

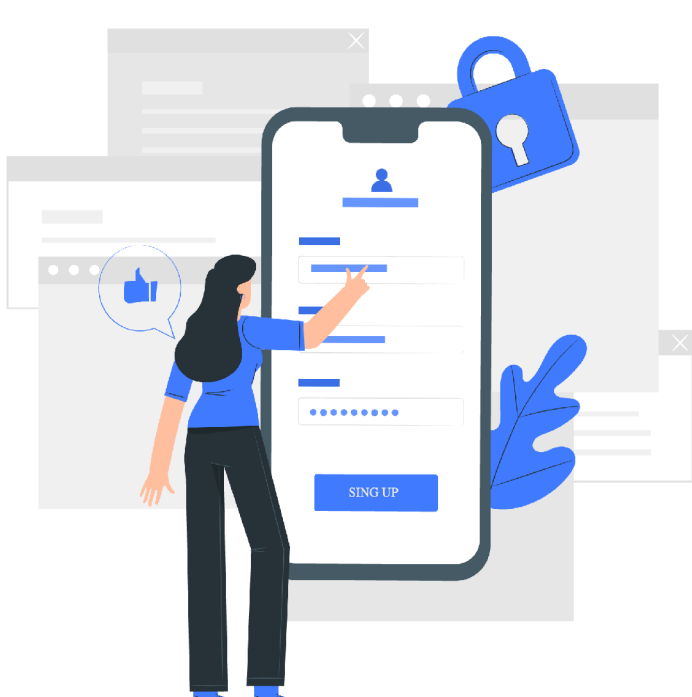
IT admins can wipe the work container remotely, safeguarding corporate data without affecting personal information in case of loss or turnover.

Compliance Management

Security and compliance policies are enforced within the work profile, including app restrictions, password requirements, and device health checks.

Advanced Security

Enforces security policies within the work profile, enabling compliance and protecting sensitive information on company-owned devices.



Choosing between BYOD and WP-C depends on your organization's priorities—**flexibility** and **cost savings** with BYOD, or **stronger security** and **control** with WP-C.

Hexnode supports both with solutions that **simplify management**, helping businesses balance operational needs with **security** and **usability**.

