

Asset management guide for businesses

Optimizing efficiency with effective asset management

WHITE PAPER



hexnode

TABLE OF CONTENTS

Introduction	03
What is asset management?	04
Chapter 1: Why is asset management important?	05
Chapter 2: Hexnode and asset management	07
Chapter 3: Why choose Hexnode for asset management?	09
Device provisioning and deployment as part of Hexnode's asset management capabilities	10
Hexnode's hardware and software inventory management	11
Remotely manage and monitor your assets with Hexnode	12
Securing your network and data with Hexnode while keeping an eye on data usage	13
Compliance check and asset tracking with Hexnode	15
Manage your asset lifecycle with Hexnode	16
Conclusion	17



Introduction

Businesses recognize the importance of diverse assets like tech devices and intellectual property. Consequently, protecting these assets from misuse has become imperative. Thus, asset management is crucial in corporate environments as it involves safeguarding and managing assets.

More than a quarter of a millennium ago, the Industrial Revolution shook the world much as the IT scene has taken over today's market space. In the modern IT world, we see a similar revolution in technology. This revolution has enabled businesses to automate processes, reduce costs, and increase efficiency. The development of computers, software, and the internet has created a new era of information technology, driving innovation and transformation across industries.

While the IT sector takes over the market and business worlds, the tools that give the IT sector the power to spread so intricately across the different industries are the assets employed in these offices and corporate environments. But what assets? Technically, assets refer to anything and everything owned by a company or individual that has value. From an organizational or institutional point of view, the term assets would be a blanket term covering both the physical and digital aspects.

WHAT IS ASSET MANAGEMENT?

In the most general of explanations, asset management refers to managing a company's or individual's investments to maximize returns while minimizing risk. This involves making decisions about the acquisition, ownership, use, and disposition of assets. In the IT industry, asset management refers to managing an organization's IT assets, such as hardware, software, and data, to ensure optimal performance, minimize risk, and control costs. IT asset management involves identifying, tracking, and managing all IT assets throughout their lifecycle, from acquisition to disposal. This includes monitoring the usage, maintenance, and upgrade of IT assets, as well as ensuring compliance with licensing and regulatory requirements.

Effective IT asset management can provide several benefits to organizations. Asset management can help organizations to:

- Control costs associated with IT assets
- Optimize IT performance and availability
- Ensure compliance with licensing and regulatory requirements
- Minimize security risks and protect sensitive data
- Reduce downtime and mitigate risks associated with IT failures



1

Why is asset management important?

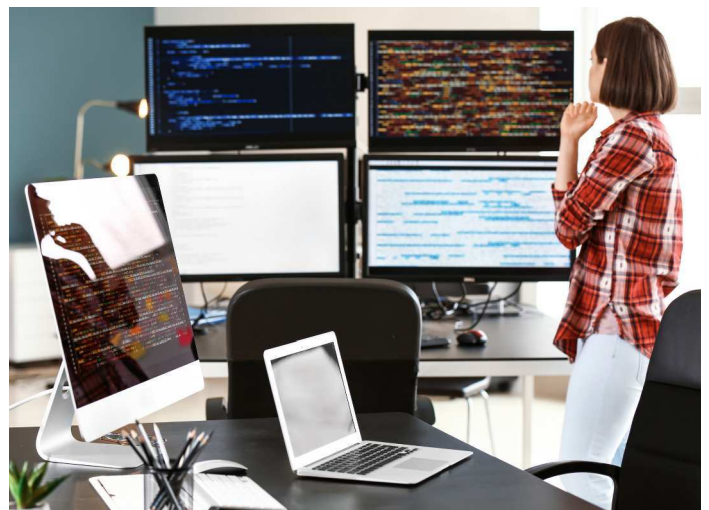
IT asset management involves inventory management, procurement, configuration management, performance monitoring, compliance management, and disposal.

There is no denying the fact that asset management is an essential function in the IT industry that involves managing an organization's IT assets throughout their lifecycle. IT asset management is critical for any organization relying on IT resources to operate. This is because IT assets can represent a significant investment for organizations.

Poor asset management can lead to inefficiencies, unnecessary costs, and increased risks. Conversely, effective asset management can help organizations reduce costs, improve efficiency, and mitigate risks associated with IT operations.

Fundamentally, asset management helps organizations realize four main goals that include:

- **Cost savings:** IT asset management allows organizations to optimize the usage of their IT assets, which can result in cost savings. For example, by tracking the usage of software licenses, organizations can identify underutilized licenses and reassign them to other users or departments, rather than purchasing new licenses. Similarly, by monitoring the lifespan of hardware assets, organizations can plan for replacements and upgrades in advance, reducing the risk of unplanned downtime and associated costs.
- **Improved efficiency:** IT asset management can help organizations improve their IT performance in many ways. For example, by monitoring the performance of servers and other hardware assets, organizations can identify bottlenecks and optimize their configurations to improve throughput and reduce latency. Similarly, by tracking software updates and patches, organizations can ensure that their applications run on the latest and most secure versions, reducing the risk of security vulnerabilities and improving performance.
- **Risk management:** IT asset management can help organizations reduce the risk of data breaches, system failures, and other IT-related risks by identifying and addressing potential vulnerabilities. For example, by monitoring the configuration of servers and other assets, organizations can identify potential security vulnerabilities and take corrective action before they can be exploited by attackers. Similarly, by tracking the usage of software licenses, organizations can ensure that they are compliant with licensing agreements and avoid the risk of fines and penalties.
- **Compliance:** IT asset management can help organizations ensure compliance with licensing and regulatory requirements. For example, by tracking the usage of software licenses, organizations can ensure that they are in compliance with the terms of their licensing agreements and avoid the risk of fines and penalties. Similarly, by tracking the storage and usage of sensitive data, organizations can ensure compliance with data protection regulations such as GDPR, HIPAA, and others.



2

Hexnode and asset management

A photograph showing two women in an office environment. One woman is seated at a desk, looking at a computer monitor. Another woman stands behind her, also looking at the screen. The office has a brick wall and large windows in the background.

Asset management is a critical component of Hexnode's platform, allowing businesses to track and manage their hardware and software assets from a single dashboard. As part of asset management, organizations can use Hexnode to enforce policies, configure devices, and secure data across all their assets.

Poor asset management can lead to inefficiencies, unnecessary costs, and increased risks. For example, without proper management, IT assets can become outdated, leading to slower performance and increased downtime. Similarly, underutilized assets can result in unnecessary expenses, and unsecured assets can lead to data breaches and other security risks.

While the concept of asset management may seem overwhelming, there are solutions dedicated to simplifying the process. Modern asset management solutions provide organizations with a centralized platform to manage their assets, monitor their performance, and ensure compliance with regulations.

Managing assets can be a daunting task, especially for large organizations with multiple locations, departments, and employees. Fortunately, Hexnode offers a comprehensive solution for asset management that addresses all aspects of asset management, including inventory management, software management, security management, and mobile device management. Hexnode offers a wide range of asset management capabilities that can help organizations track and manage all their hardware and software assets.

Hexnode provides a centralized view of all assets across the organization, including desktops, laptops, mobile devices, and software applications. With Hexnode, organizations can track the location, usage, and status of each asset, making it easy to manage assets and allocate resources efficiently. Hexnode helps organizations manage their software assets, including licenses, updates, and patches. With Hexnode, organizations can track software usage, monitor licenses, and ensure that all software is up-to-date and secure.

Additionally, Hexnode enforces security policies and tracks security-related data to ensure that all assets are secure and compliant. With Hexnode, organizations can monitor user access, enforce password policies, and track security incidents. Hexnode also provides comprehensive mobile device management (MDM) capabilities, enabling organizations to manage all their mobile devices, including smartphones, tablets, and laptops. With Hexnode, organizations can enforce policies, configure devices, and secure data on mobile devices.



3

Why choose Hexnode for asset management?

Hexnode has been successfully implemented by many organizations, providing real-world examples of the benefits of effective asset management. From large retail chains improving operational efficiency and reducing costs, to healthcare organizations employing Hexnode to enforce security policies, everyone's satisfied with Hexnode's asset management capabilities.

So, why choose Hexnode to manage your corporate assets? Hexnode offers a wide array of capabilities to manage your assets that will benefit your organization in the following ways:

Hexnode can ensure improved operational efficiency. By tracking all assets and managing them efficiently, organizations can easily streamline their operations and reduce costs. Hexnode's selling point is its ability to provide real-time visibility into the entire lifecycle of the assets. With Hexnode, organizations can identify underutilized assets, optimize resource allocation, and reduce unnecessary expenses. Hexnode helps organizations enforce security policies and track security-related data, reducing the risk of security breaches and ensuring compliance with industry regulations. So, Hexnode offers the added perk of improved security and compliance.

Furthermore, with comprehensive asset management data provided by Hexnode, organizations can make better decisions and plan more effectively for the future. By knowing exactly what assets they have, where they are, and how they are being used, organizations can plan for upgrades, replacements, and resource allocation more effectively. This is further aided by Hexnode's customizable reports and dashboards that provide real-time insights into asset utilization, maintenance costs, and other key performance indicators. It offers organizations a powerful tool to manage their IT assets efficiently and effectively. Tracking security-related data, reducing the risk of security breaches, and ensuring compliance with industry regulations are all part of the package with Hexnode.

DEVICE PROVISIONING AND DEPLOYMENT AS PART OF HEXNODE'S ASSET MANAGEMENT CAPABILITIES

Hexnode UEM provides the necessary settings, applications, and configurations to simplify the provisioning of new devices for employees. Hexnode offers several zero-touch enrollment methods for various device types, such as macOS, iOS, iPadOS, tvOS, and Android devices.

- Enroll your Apple devices using Hexnode's integration with Automated Device Enrollment.
- Enroll your Android devices in the Android Enterprise program through Hexnode's integration with Android Zero Touch enrollment.
- Alternatively, enroll your Android devices without user intervention by pre-installing the Hexnode Agent app into the ROM or firmware.
- Hexnode's integration with Knox Mobile Enrollment (KME) allows bulk deployment of Samsung Knox devices.



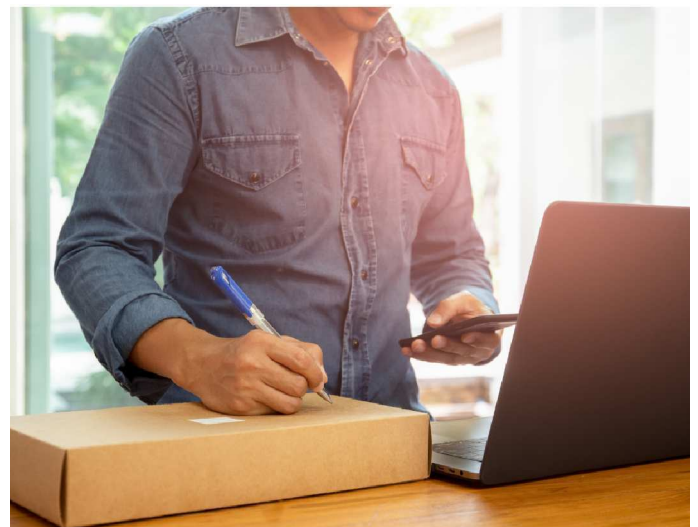
Devices can be pre-approved, and policies can be automatically applied once enrolled in Hexnode. This approach saves time and ensures consistent configuration.

The platform also facilitates the distribution of apps and configurations based on user roles or groups, ensuring that each employee has the resources necessary to perform their duties. Hexnode can automate the installation of software updates and patches to keep devices secure and up-to-date. Over-the-air (OTA) updates can remotely push device configurations, app updates, and software patches to devices without requiring user action. Additionally, scheduling and automating device and app backups ensure that critical data is not lost in the event of a device failure or security breach.

Custom device profiles can be created and deployed, including unique settings, restrictions, and configurations for different devices or groups of devices. Implementing geofencing allows the restriction of app usage and device access based on physical location. This ensures that employees only have access to company resources when in authorized areas. Remote control and screen-sharing capabilities are available to provide real-time support and troubleshooting to employees when issues arise. When devices are no longer in use, Hexnode allows the secure retirement and removal of all data.

HEXNODE'S HARDWARE AND SOFTWARE INVENTORY MANAGEMENT

Hexnode UEM allows for the recording of device summary information such as the device name, model, and serial number, along with warranty and maintenance details. Easily track the location of hardware assets to ensure they are in the correct place and accounted for. Efficiently view the complete history of device actions, such as application installations and policy changes. Furthermore, carry out updates to the different operating systems powering your devices with minimal disruption to business productivity.



Custom apps can be uploaded to the Hexnode app inventory, making them available for distribution to managed devices. The list of installed apps on managed devices can be viewed to ensure compliance with company policies. App versions can be managed, and previous versions can be rolled back if necessary. Automatic app updates can be set up to ensure that devices are running the latest app versions.

Monitoring app usage and data consumption is possible to identify potential security or performance issues. App usage policies can be created to enforce rules around app usage, such as limiting access to sensitive data.

A quick glance at all that Hexnode has to offer as part of hardware and software inventory management:

- Easily keep track of the device specifications and other handy information from under the device summary tab
- Location tracking for all the assets
- A complete history of all the actions performed on the assets
- Easy addition of custom apps to the Hexnode app inventory - efficient app distribution
- Easy access to the list of all the apps installed on the device



REMOTELY MANAGE AND MONITOR YOUR ASSETS WITH HEXNODE

Hexnode's remote management solution enables administrators to centrally manage devices and enforce security policies from a single console. Device features such as the camera, microphone, and potentially harmful apps can be restricted to maintain enterprise security and productivity. The platform provides comprehensive remote management of corporate assets, regardless of the platform and device type. Administrators can remotely manage device restrictions, reducing the need for manual intervention. Real-time updates on device usage are also available, allowing admins to promptly identify and address security threats. The remote viewing of device screens enables real-time technical support for employees, minimizing downtime and increasing productivity.

Network traffic and usage can be monitored to detect potential security breaches and unauthorized access. Email and web content filtering policies can be configured and enforced to prevent phishing attacks and other security threats. Reports on device and software usage can be generated to track trends, identify potential issues, and optimize resource allocation. Integration with third-party tools and services can extend the capabilities of the asset management solution and improve overall IT infrastructure management.

Hexnode offers a variety of features as part of remote management and monitoring of assets. With Hexnode you can:

- Manage devices and enforce security policies from a centralized console
- Remotely restrict and allow permissions to access the device functionalities like camera, microphone, USB, etc.
- Enable the IT team to troubleshoot and apply security patches and updates remotely
- Secure your lost/stolen assets and the sensitive data within these devices by remotely activating the lost mode or even wiping the assets for a stronger action



SECURING YOUR NETWORK AND DATA WITH HEXNODE WHILE KEEPING AN EYE ON DATA USAGE

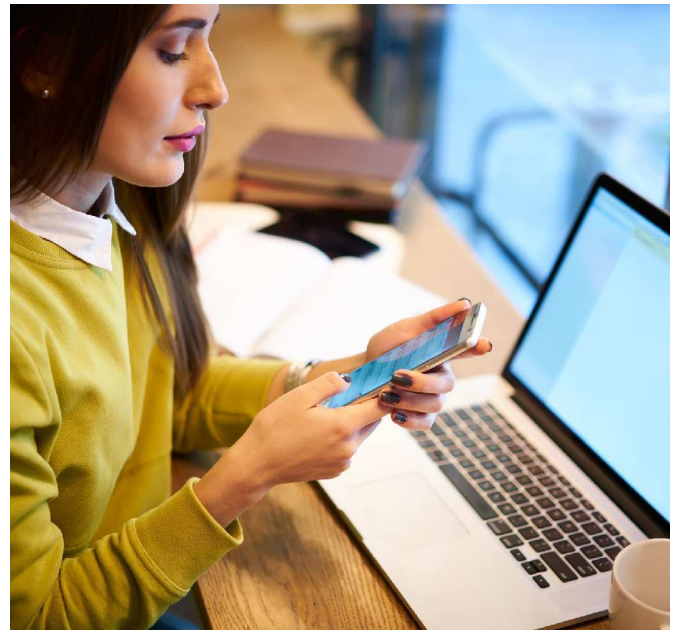
Hexnode's remote management solution offers several features to streamline network and communication management. Devices can be configured to automatically connect to trusted networks without the need for a password, simplifying network access for end-users. In addition, VPN and global HTTP proxy settings can be pushed over-the-air to managed devices after being remotely configured in bulk by administrators. User data can also be synchronized to their respective endpoints using wildcards to configure user accounts on managed devices for email, calendar, and contacts. To enhance network security, Hexnode allows administrators to block communication from untrusted external networks, preventing unauthorized access. Lastly, email settings on company devices can be configured to securely access company inboxes, ensuring sensitive information remains protected.

Prevent unauthorized access and data transfers with Hexnode. Hexnode limits access to corporate content and only allows authenticated users to access media. Advanced media usage settings can be configured for external drives, internal drives, and optical media to maintain data security. In addition, secure password policies can be established to safeguard the information stored on the devices. Moreover, Hexnode provides IT admins with granular control over how devices use data on specific networks or by restricting network access based on data usage.

Data usage tracking can be enabled to monitor data use on specific devices or groups of devices, and alerts can be configured to notify the user, admin, or both when data usage exceeds a certain threshold. The device can be restricted to using Wi-Fi or mobile data only or blocked from all networks, depending on the policy applied, once it reaches the maximum data usage limit. IT admins can also set data limits to track the daily and monthly data use of a device or group of devices.

Skim across the different configurations that you can employ for easy and efficient asset management with Hexnode:

- Enable your assets to connect automatically to the secure office network.
- Securely push VPN and global HTTP proxy settings to the managed assets.
- Block communication from unauthorized channels and prevent unauthorized access to corporate data.
- Apply configurations to manage media usage.
- Set limits for daily and monthly data usage on the managed assets.



COMPLIANCE CHECK AND ASSET TRACKING WITH HEXNODE

Hexnode UEM provides a comprehensive solution for compliance management, utilizing geofencing policies and dynamic groups to automatically identify and address non-compliant devices. The platform generates reports to demonstrate compliance with regulatory requirements and keeps records of all activities performed on IT assets for future reference and auditing purposes. With Hexnode UEM, organizations can monitor access to sensitive data and ensure compliance with data privacy regulations such as GDPR or HIPAA.



To comply with data security regulations, Hexnode UEM enables organizations to implement measures to secure confidential data, such as encryption and access controls. Regular assessments can be conducted to identify areas of non-compliance and develop corrective actions to remediate them. Maintaining a complete inventory of software and hardware assets is also crucial to complying with software license agreements and hardware warranties.

Hexnode UEM also allows administrators to enforce compliance with password policies, app requirements, and Wi-Fi access restrictions tailored to specific users or groups. Notifications are sent promptly to administrators when policy violations occur, enabling them to monitor enrolled devices in real time and ensure that they always follow the rules. With geofencing, dynamic groups, and other advanced features, Hexnode UEM offers comprehensive compliance management capabilities to help organizations stay secure and productive.

Here's a list of all you can do by trusting Hexnode with compliance checks and asset tracking:

- Geofencing policies and dynamic grouping of assets for easy compliance checks.
- Automated report scheduling and generation.
- Ensure compliance with data privacy regulations like GDPR and HIPAA.
- Maintain compliance inventory of both network and hardware assets.
- A proper notification system that keeps the IT team in the loop with the compliance of all the assets.

MANAGE YOUR ASSET LIFECYCLE WITH HEXNODE

Hexnode provides IT managers with powerful tools to enforce policies for enhanced endpoint security, including user and device-specific policies for enterprise devices. One key aspect of secure access to corporate resources is the implementation of identity certificates for user validation, which Hexnode recommends. To prevent unauthorized access and mitigate potential security risks, organizations can impose data usage restrictions across networks and applications using Hexnode.



Hexnode also enables organizations to ensure that only authorized employees can access files that have been remotely deployed to devices, helping to safeguard sensitive data and maintain compliance with regulatory requirements. To protect against identity theft and other malicious attacks, strong password and authentication policies can be enforced with Hexnode. The ability to monitor and manage endpoints remotely minimizes the need for manual intervention, streamlining IT operations. This is an added perk of employing Hexnode for your asset management needs. Hexnode can efficiently keep endpoints current and protected from emerging threats by automating software updates and patches. Additionally, tracking and optimizing asset utilization helps ensure resources are allocated efficiently and cost-effectively. Hexnode can easily iron out these measures to manage your IT assets while you relax.

So, to sum it all up, with Hexnode, you can:

- Apply device-specific policies for your corporate assets.
- Impose data usage restrictions.
- Automate software updates and patches.
- Easily track the location of all your assets.
- Efficiently secure lost/stolen devices.
- Monitor and manage endpoints effortlessly.



Conclusion

Today, IT organizations need to be agile and responsive to stay ahead of the competition. The key to achieving this goal is effective asset management. This is where Hexnode comes in as the one-stop solution for all things asset management.

With its comprehensive suite of features and capabilities, Hexnode enables IT managers to monitor and manage endpoints remotely, enforce user and device-specific policies, automate software updates, and patches, and track asset utilization.

Hexnode's advanced security features ensure that sensitive data is safeguarded, and compliance with regulatory requirements is maintained. By leveraging Hexnode's powerful asset management capabilities, organizations can achieve greater efficiency, lower costs, and higher productivity, enabling them to focus on their core business objectives. Hexnode is the solution of choice for IT organizations looking to stay ahead of the curve in the ever-evolving digital landscape.