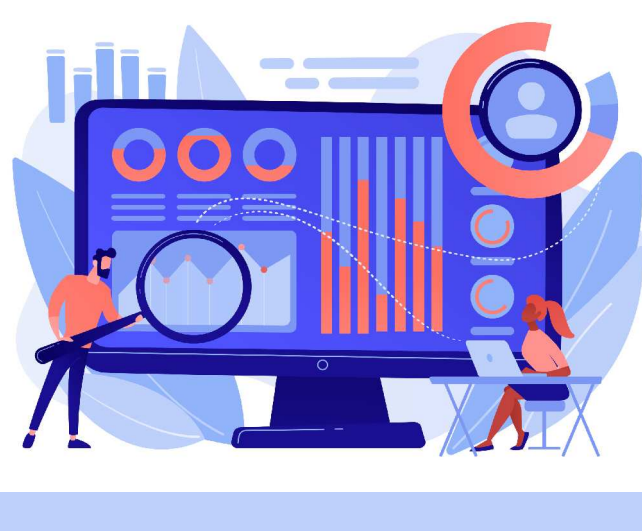


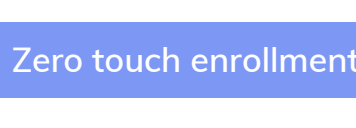
Hexnode UEM: An inside look



About Hexnode UEM

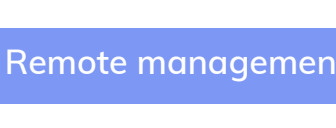
Hexnode UEM (Unified Endpoint Management) is an all-in-one solution for IT admins to manage and secure their organization's mobile devices and apps across multiple platforms. It offers a centralized dashboard for device management, app deployment, and secure resource distribution, with features like passcode policies, encryption, and remote wipe capabilities.

What Hexnode UEM offers IT admins



Zero touch enrollment

Quick deployment and configuration of devices to reduce burden on IT teams.



Remote management

Monitor and control devices from a centralized location to provide real-time visibility.



Robust security

Maintain data security with passcode policies, encryption, remote wipe and many more.



App management

Streamline app management with app deployment, app catalog and app configuration.



Multi-platform support

Manage devices across various operating systems including iOS, Android, Windows, macOS and tvOS.



Device monitoring

Provide detailed insights into device usage, security compliance and application usage for IT admins.

Why Hexnode UEM is a must-have for IT admins

- Hexnode UEM provides **reliable assistance** to IT admins whenever they need it.
- Their **dedicated team of experts** is always ready to help via phone, email, or chat.
- They offer **top-notch customer service** that sets them apart from the competition.
- Hexnode UEM's team is available round-the-clock to **help IT admins navigate any challenges** that come their way, whether it's an urgent issue or just a quick question.

The one-stop solution for device management

For IT admins, it is crucial to have a powerful device management solution. Hexnode UEM is the one-stop solution for managing all your organization's mobile devices and apps across multiple platforms.

Let's take a closer look at the unique features of Hexnode UEM for each platform.

macOS device management



- Hexnode Gateway for easy enrollment and management.
- DEP and VPP integration for easy device deployment and app distribution.
- Mac scripting for automating device management tasks and executing commands remotely.
- Activation Lock to prevent unauthorized access to a lost or stolen macOS device.
- AD Asset Binding for streamlined device management and user authentication.

Android device management



- Samsung KME and Android Enterprise integration for streamlined enrollment and device management.
- Android Enterprise work profile for separating work and personal apps and data.
- Rugged device management with OEMConfig.
- Enterprise app store for managing app deployment and distribution.
- Restricting users from tampering with sensitive device functionalities including USB debugging.

iOS device management



- Automate the enrollment of Apple devices and perform wireless device supervision.
- Geofencing and location tracking for managing devices based on their physical location.
- Remote screen sharing for troubleshooting and training purposes.
- App inventory management for tracking app usage.
- Delay iOS updates to give additional time to test bugs and issues associated with the latest OS release.

Windows device management



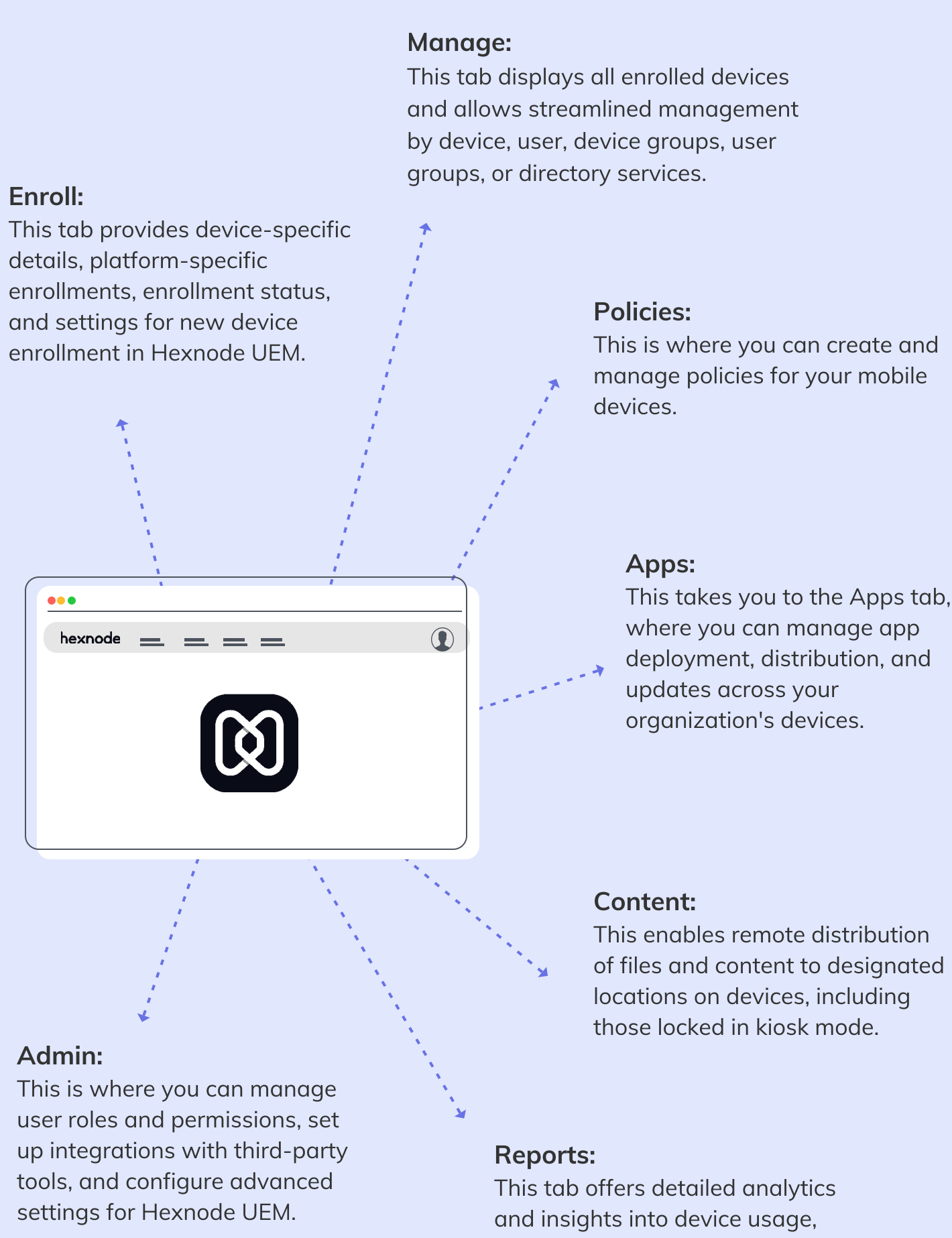
- Integration with Microsoft's System Center Configuration Manager (SCCM) to migrate, enroll, and manage Windows 10 client devices from Hexnode portal.
- Custom Windows scripts deployment.
- Remote control and access feature for troubleshooting and training purposes.
- Application whitelisting and blacklisting to control which apps can be installed on devices.

tvOS device management



- Bulk distribution of enterprise and VPP apps seamlessly over-the-air.
- Enforce restrictions on tvOS device settings such as VoiceOver, Invert Colors, Zoom adjustments, touch, Auto-Lock and more.
- Update Apple TVs to the latest OS versions remotely.
- Remotely wipe or reboot an Apple TV devices from the centralized console.
- Configure global HTTP proxy to route all the HTTP traffic of your managed devices through a proxy server.

Hexnode UEM dashboard: A quick walkthrough



Get started

With Hexnode, you can streamline the device management process and gain complete visibility and control over your mobile devices, all while ensuring security. So, start a [14-day free trial](#) to experience hassle-free device management and secure data with Hexnode.