

Kiosk at your fingertips

Everything you should know about kiosk mode

Kiosk mode is a standard method for locking down a device while it is used for a specific job by enabling only a few selected programs to run.



A quick look at the different kiosk mode configurations



Single App Kiosk

- Allows for a restricted experience by restricting user access to a single application.
- In addition to the typical single app kiosk mode, iOS devices have an autonomous single app kiosk mode for specific apps.

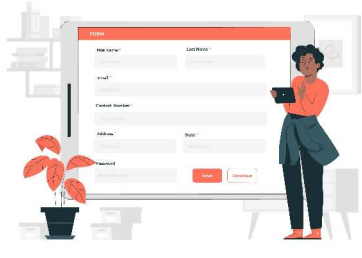
Use case: Students' tablets may be locked in a single program to prevent them from committing test malpractice.



Multi App Kiosk

- A security function that enables you to restrict your devices to a certain selection of apps.
- Users would have no access to any other applications or device settings besides those authorized by the IT admin.

Use Case: A doctor and a nurse can share the same device by implementing a multi-app kiosk.



Website Kiosk

- Primarily controls web usage on a particular device through browser lockdown.
- Restricts browser access to specified or whitelisted URLs defined by the administrator.

Use case: When bank associates wish to acquire new client information by utilizing a kiosk-enabled device to fill out forms, they frequently employ web-based kiosks.



Digital Signage display

- A self-contained device that displays digital content to attract pedestrians.
- Unlike conventional digital displays, this kiosk mode has software, an inbuilt media player, and, in some cases, a secure pay function.

Use Case: Giant screens that display useful public information like weather alerts.

Configuring Kiosk using a UEM solution

Using a UEM such as Hexnode to secure your Kiosk devices allows you to quickly establish Kiosk rules and deploy them in bulk to your business devices.



Android

- Users cannot access the home screen or default launcher in Android kiosk mode.
- Apart from the single and multi-app kiosks, Android devices may also be set up in website Kiosk mode using Hexnode, giving access to only the designated websites.
- Hexnode offers a digital signage kiosk where you may show clips or photos to promote your product or service.

iOS & iPadOS

- In iOS and iPadOS devices, Hexnode UEM offers Single App, Multi App, and Web App modes.
- Hexnode's Single App Mode uses iOS's Guided Access feature to lock your device to a single app and stops users from going to the home screen.
- With Hexnode, iOS/iPadOS devices may be locked down into Autonomous single app mode, which can only be exited if the user performs the required task.



Windows



- On Windows devices, you create a distinct local User Account. Then use Hexnode UEM to restrict access to particular programs.
- When we connect to the Kiosk account, the specified app is opened.
- The app is started immediately after the welcome screen in Single App Mode and cannot be dismissed; however, in Multi App Mode, the programs are accessible via the start menu and may be toggled in between.

Apple TV

- Hexnode offers Single app kiosk mode for Apple TVs.
- The tvOS device must be supervised so that enterprise apps can be added to the kiosk mode. By supervising a device, the organization gets more control over it and can apply restrictions as needed.

