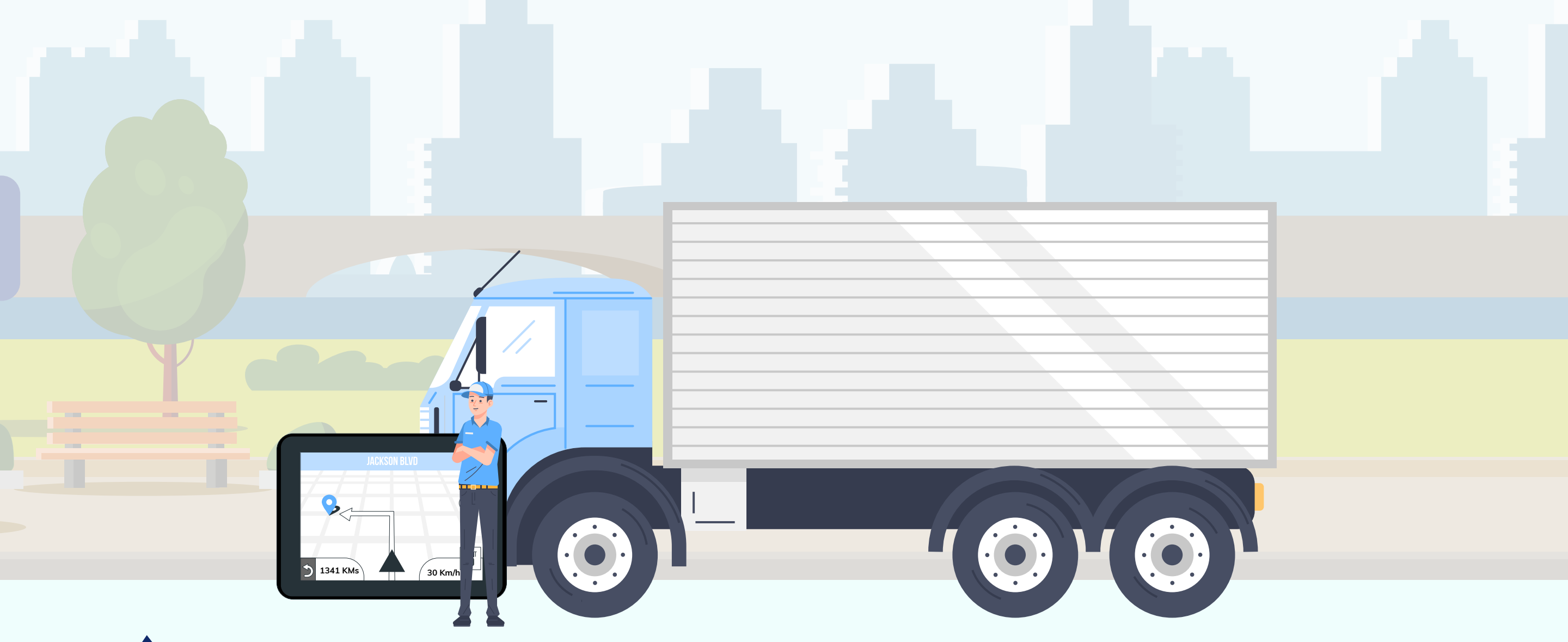


What you should know about Electronic Logging Devices (ELDs)



The Federal Motor Carrier Safety Administration (FMCSA) enforced the **Electronic Logging Device (ELD)** mandate in 2015, which requires drivers who operate a commercial motor vehicle (CMV) to incorporate an ELD.

What exactly does an Electronic Logging Device (ELD) do?

An ELD connects to the vehicle's engine and automatically **records data** regarding vehicle operation.

It tracks driver activity including driver hours of service (**HOS**) and record of duty status (**RODS**).



It also captures data on the vehicle's engine, movement and miles driven.

It updates driver status in real-time to support fleet compliance, inspections and planning.

Why adopt ELD for Commercial Motor Vehicles (CMVs)?

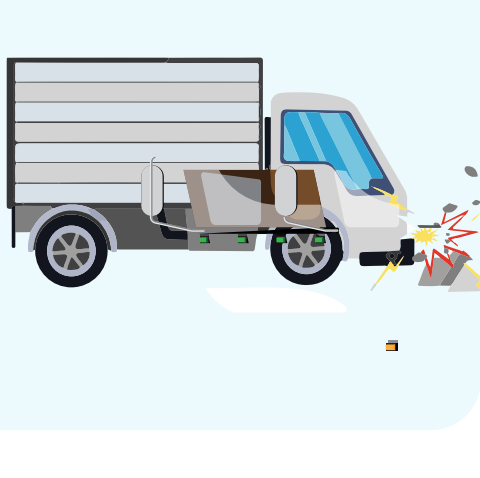
1844

crashes avoided annually



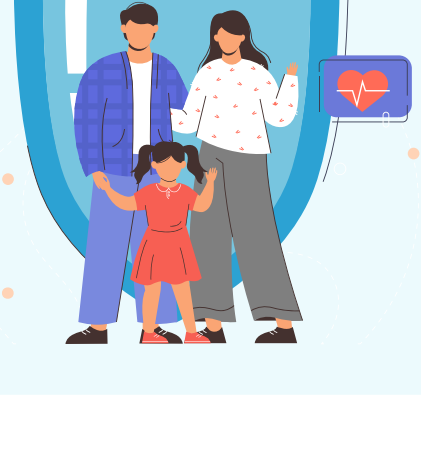
11.7%

lower crash rate



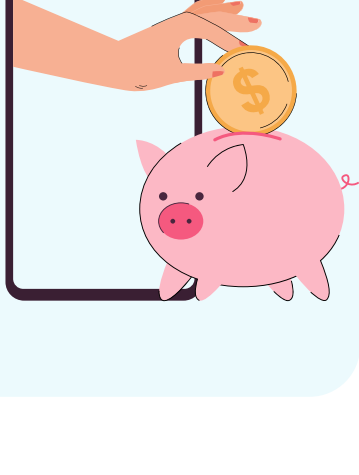
26

lives saved annually



\$705

savings per driver



Better route management

Fleet managers can monitor vehicles through location tracking, which helps them to plan out the best routes.

Minimise paperwork

ELD helps automate a lot of manual processes, including manually recording HOS.

Quick vehicle diagnostics

ELD helps in performing realtime vehicle diagnostics and administering remedial measures.

Increase profits

ELD helps reduce operational costs, which eventually translates into higher profits.

Helps improve driving ability

Automatically identify undesirable driving behaviours and gather data to help drivers improve.

Improves CSR scores

The data gathered from an ELD can be used to help improve Carrier Safety Rating (CSR) scores.



The average cost of ELD HoS violations is **\$2,867**, while the highest fine recorded is **\$13,680**.



Is it possible to use smartphones and tablets as ELDs?



FMCSA allows a logging software to be installed on a smartphone or tablet and use it as an ELD, if it complies with ELD's technical specifications provided by the FMCSA.



95%

of truck drivers have smartphones



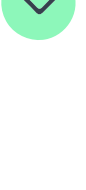
\$495 per truck

is the average price of a fixed ELD



Ease of use

BYOD ELDs are easier to use when compared to hardwired ELD units that have their own unfamiliar user-interface.



Flexibility

The level of familiarity achieved by adopting BYOD ELDs lead to more flexibility and comfort for the drivers.



Cost efficiency

BYOD-ELDs cost considerably less than a hardwired ELD. In fact, BYOD-ELDs only involve the cost of a logging software.



Portability

Unlike a hardwired ELD unit that can't be taken outside the truck, there are no physical restrictions for a BYOD ELD.

Managing Electronic Logging Devices with Hexnode UEM

Most logging software requires the app to be opened from the moment the engine is turned on to when the engine is shut down, for the app to record information precisely.

This requires precise management and control over the logging device.



Enter, Hexnode UEM.

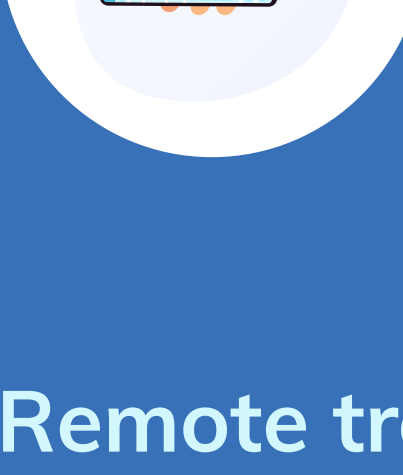
Hexnode offers the following features for managing ELD's

Kiosk lockdown



Lock down the ELDs to the logging software while restricting access to any other feature.

Run app in foreground



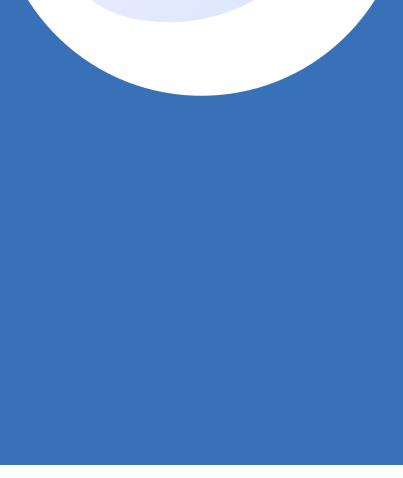
The logging software runs on foreground at all times.

Disable hardware buttons



Disables all hardware buttons and always keeps the screen on to avoid accidental app shutdowns.

Remote troubleshooting



IT can remotely control or view the device for troubleshooting, and broadcast messages to communicate with the driver.