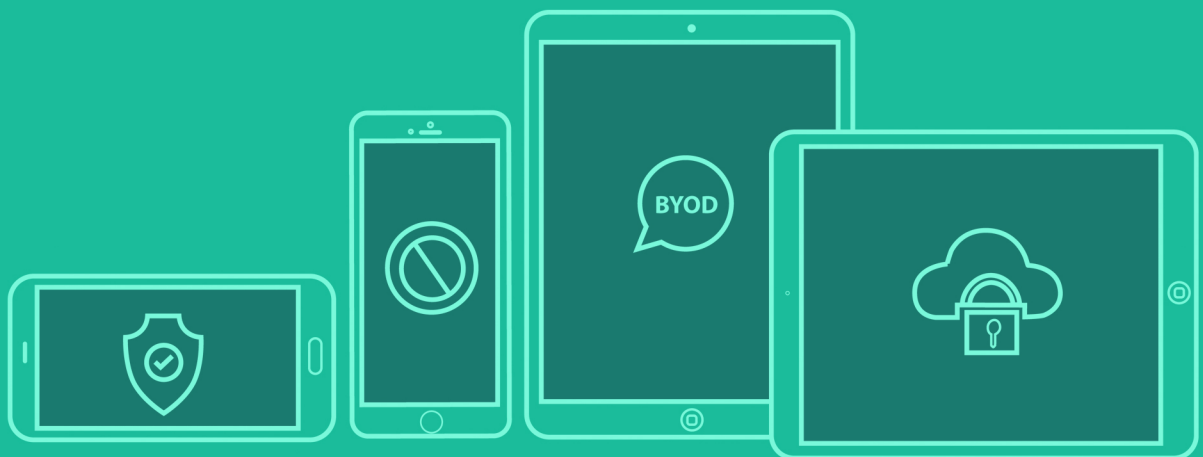


# Hexnode MDM

## Installation Guide



## Table of Contents

Before you install Hexnode MDM.....	2
Hardware requirements.....	2
Platforms supported.....	2
Operating systems supported.....	2
Supported Browsers.....	2
Supported Databases.....	2
Communication Ports.....	2
Download and installation.....	3
Accessing Hexnode MDM.....	7
Uninstalling Hexnode MDM.....	8
Contacting Hexnode support.....	8
Contact information.....	8
Technical support.....	8

## Before you install Hexnode MDM

You are about to install Hexnode MDM on your machine. Please make sure the following prerequisites are met before installation.

### Hardware requirements

- 1 GB Ram, 400 MB of available hard disk space.
- A local user account that has permission to install the software on the computer

### Platforms supported

- x64

### Operating systems supported

This installer has been tested on the following operating systems.

- Windows 2008
- Windows 2008 R2
- Windows 2012
- Windows 2012 R2
- Windows 8 & 8.1
- Windows 10

### Supported Browsers

- Chrome 40 +
- Safari 7 +
- Firefox 36 +
- Internet Explorer 9 +

### Supported Databases

- PostgreSQL (bundled with installer)

### Communication Ports

Hexnode MDM requires the following ports should be open by default, for

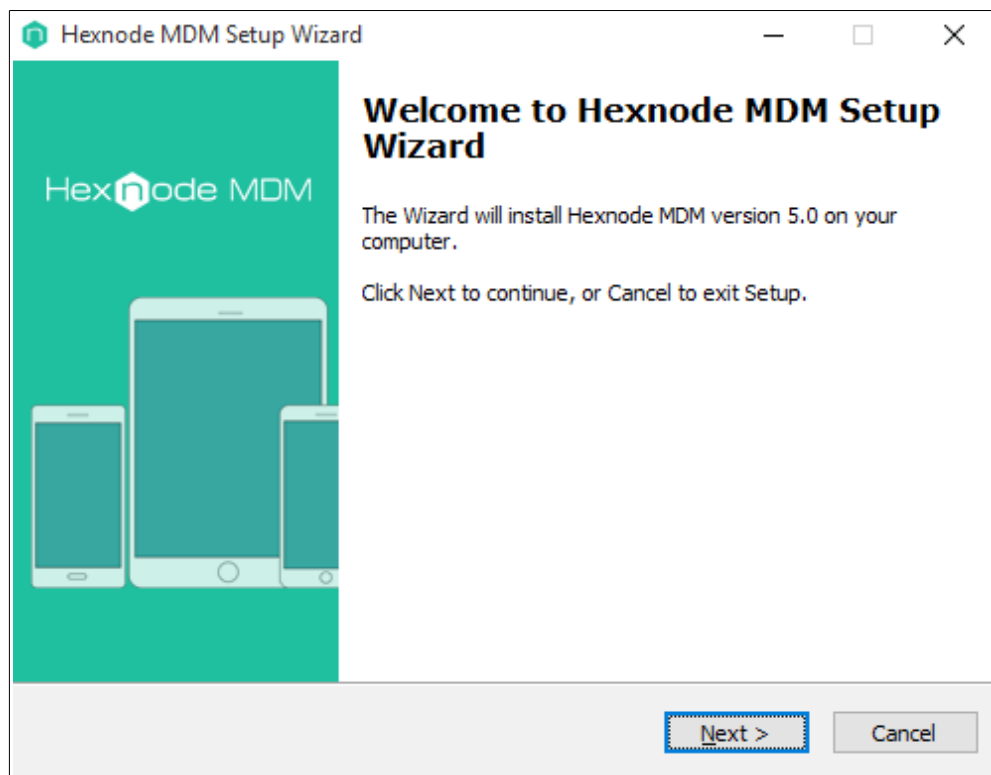
communication

- HTTP Port: 80
- HTTPS Port: 443
- Database Port: 9003

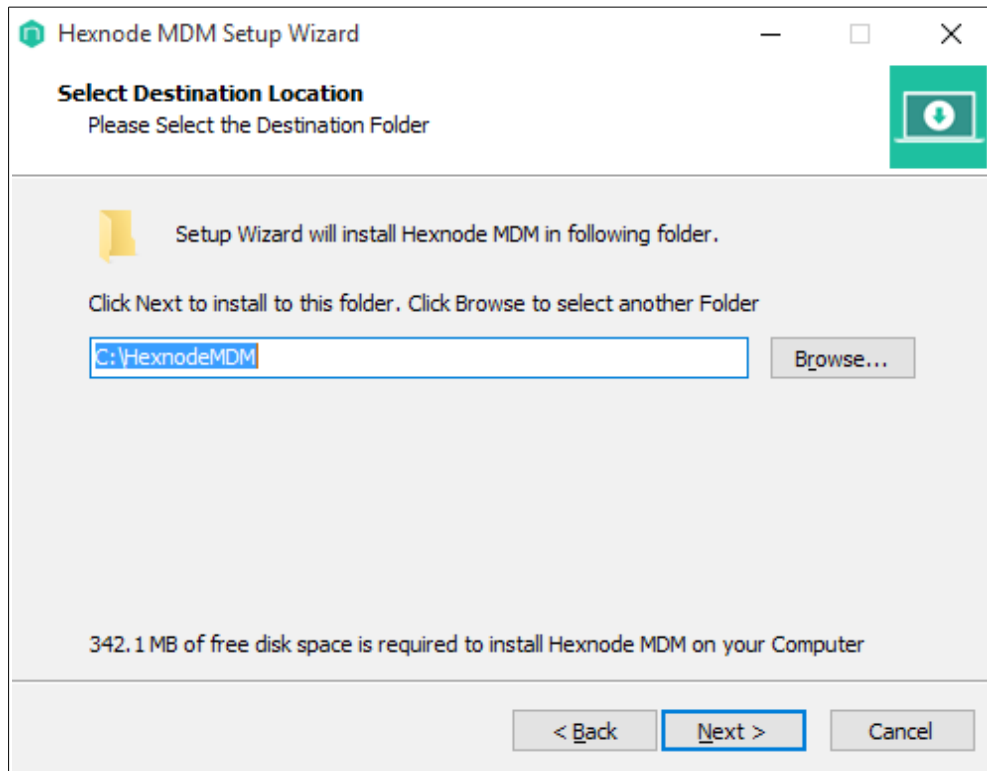
If you wish to, you can change the default communication ports

## Download and installation

1. Download Hexnode MDM setup file and save it on to your computer.
2. Right click Hexnode MDM.exe and select Run as administrator.
3. Click Next to proceed or cancel to abort installation.



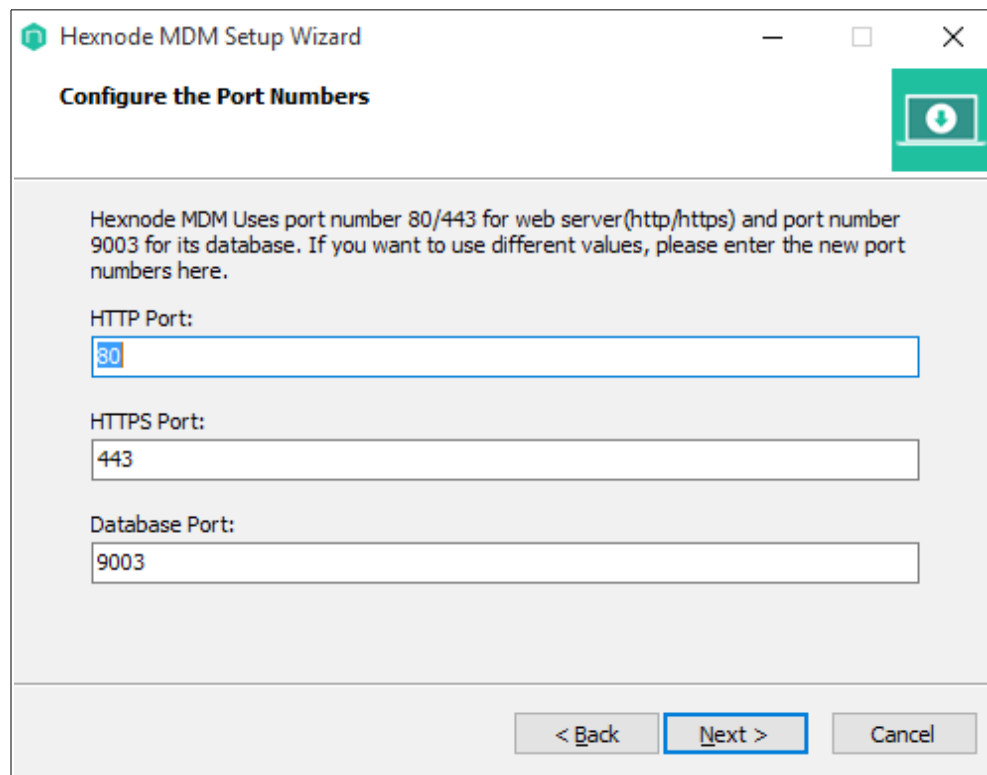
4. The default installation directory is [C:\HexnodeMDM](#). To change the directory, click Browse and select your directory of choice.



5. Configure port numbers. The default port numbers are already populated as follows.

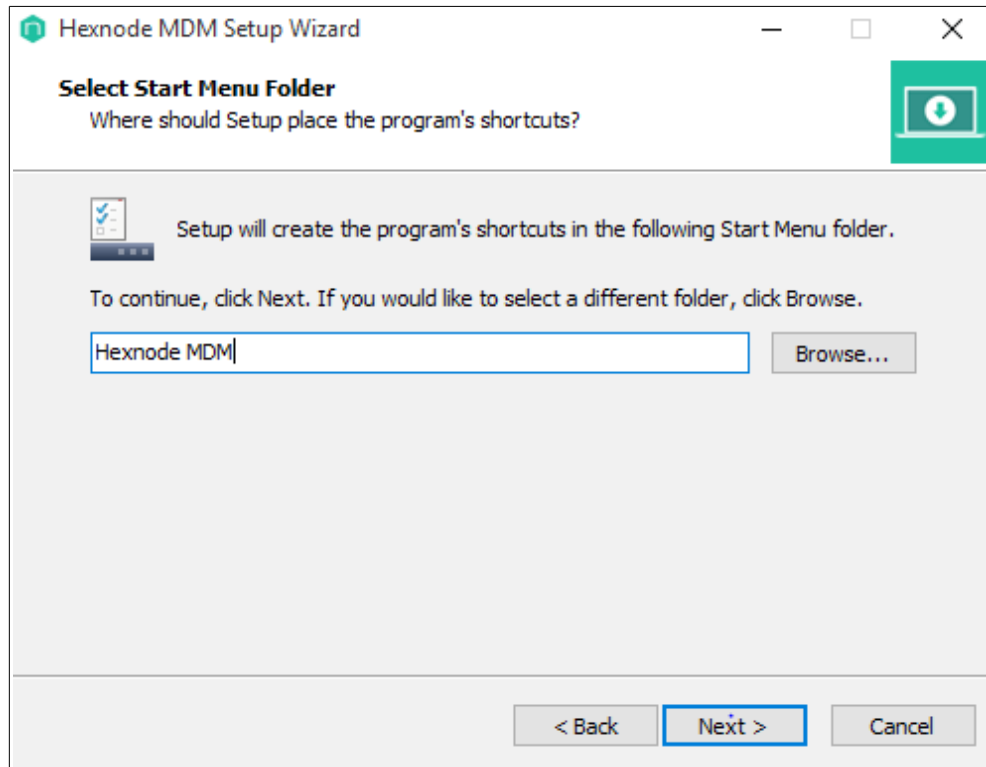
- HTTP Port: 80
- HTTPS Port: 443
- Database Port: 9003

If you wish to, you can replace those with the your ports of choice. Click Next to continue.

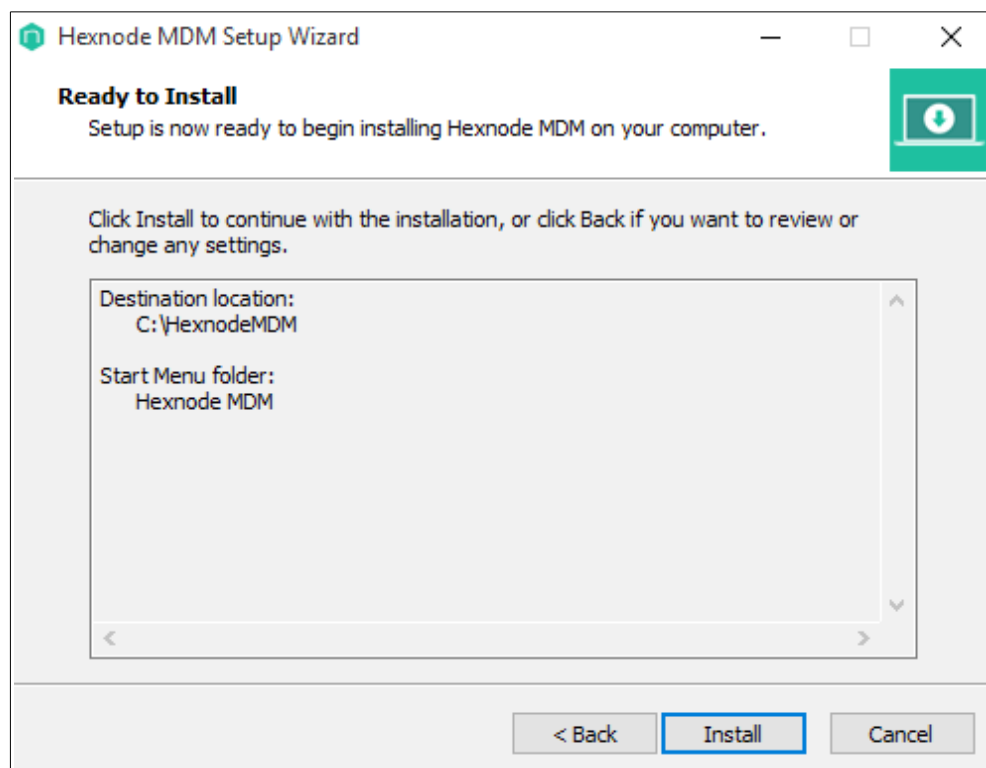


The screenshot shows a window titled "Hexnode MDM Setup Wizard" with a subtitle "Configure the Port Numbers". The window contains a text box with the following text: "Hexnode MDM Uses port number 80/443 for web server(http/https) and port number 9003 for its database. If you want to use different values, please enter the new port numbers here." Below this text are three input fields: "HTTP Port:" with the value "80", "HTTPS Port:" with the value "443", and "Database Port:" with the value "9003". At the bottom of the window are three buttons: "< Back", "Next >", and "Cancel". The "Next >" button is highlighted with a blue border.

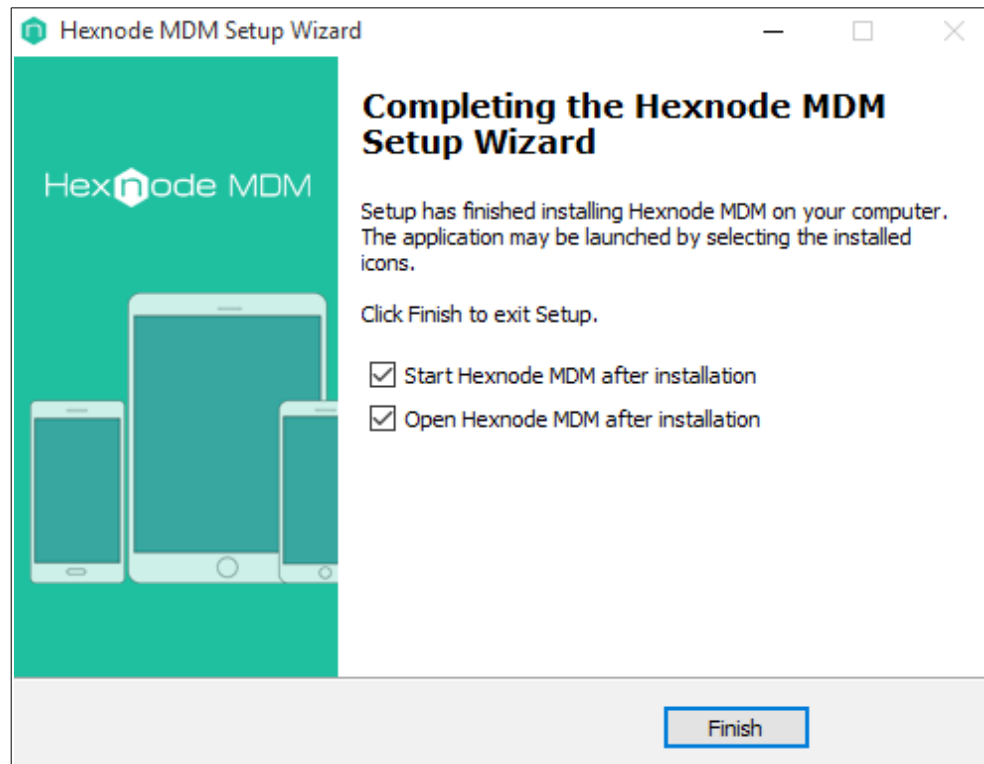
6. Create Start Menu folder with the name 'Hexnode MDM'. Click browse to select another folder. Click Next to continue



7. Click Install to proceed with the installation, Click Back if you want to review or change any settings.



8. Check 'Start Hexnode MDM after installation' to run Hexnode MDM service.  
Check 'Open Hexnode MDM after installation' to launch Hexnode MDM in your browser. Click Finish to exit Setup.



## Accessing Hexnode MDM

To access Hexnode MDM portal anytime, open up your browser and type in the following address.

`http[s]/servername:80[443]`

The default credentials are.

Username: admin

Password: admin

After logging in, you can change the password from Admin settings

Refer Hexnode MDM Admin guide on how to configure Hexnode MDM for managing mobile devices.

### Admin guide

<https://www.hexnode.com/mobile-device-management/resources/Mobile-Device-Management-Software-Userguide-Hexnode-MDM.pdf/>



## Uninstalling Hexnode MDM

On Windows, Hexnode MDM can be uninstalled from the control panel

- Open **Control Panel > Programs and Features** > Right click Hexnode MDM and choose uninstall
- or Browse to Hexnode MDM's installation directory and run uninstall.exe

## Contacting Hexnode support

### Contact information

Website: <a href="https://www.hexnode.com">https://www.hexnode.com</a>	
Email: <a href="mailto:support@hexnode.com">support@hexnode.com</a>	
United States 340 S Lemon Ave #5997 Walnut, CA 91789 Phone: +1-510-545-9700	India Seaport Airport Road CSEZ PO, Cochin Kerala – 682037 Phone: +91-484-297-4545

### Technical support

Phone: +1-866-498-940 +1-510-545-9700
Email: <a href="mailto:mdm-support@hexnode.com">mdm-support@hexnode.com</a>